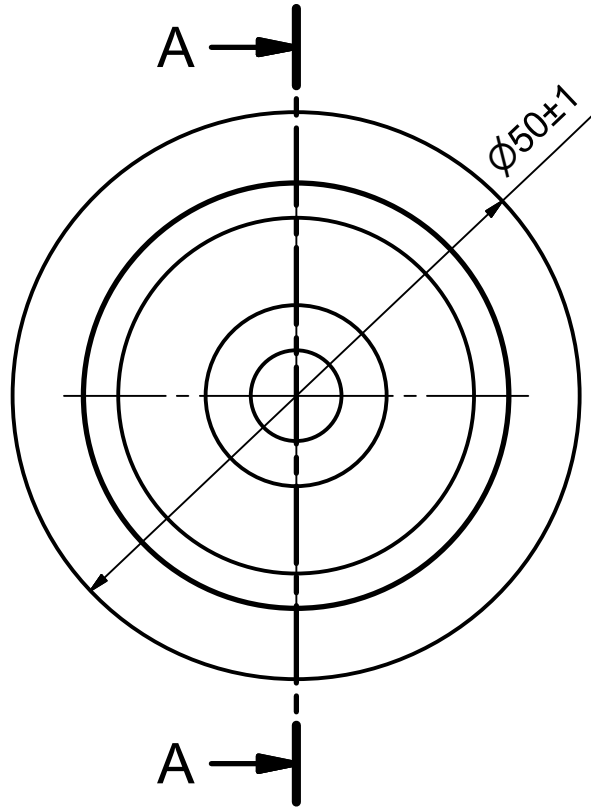
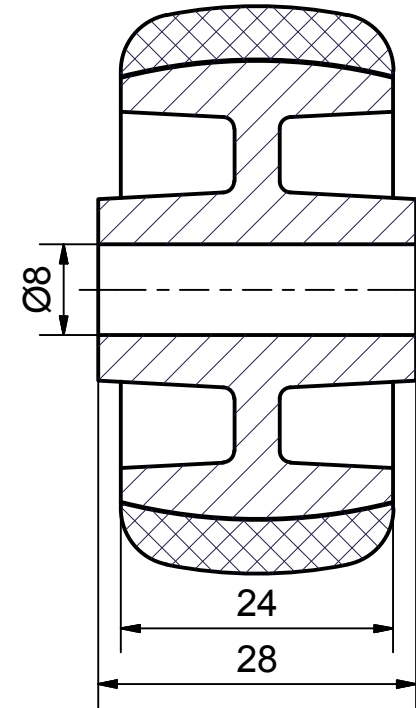





**Load Capacity: 50kg  
for speed up to 4km/h  
(According to EN 12530)**



**SECTION A-A'**



 <b>THESSALONIKI - GREECE</b>	PRODUCTION OF INSTITUTIONAL CASTORS AND WHEELS		PERMIS. VARIATIONS:		PART No:	
	This drawing is the property of RODA S.A. It must neither be reproduced in any manner nor shall it be submitted to third parties or competitors without our written consent		SURFACE FINISH :		UNF . DIM.:	
DESIGNED 11/6/2013 E.POLIMEROPOULOU		DRAWN 11/6/2013 E.POLIMEROPOULOU		PART NAME : <b>WL-TPA050M.EC</b>		
CHECKED 7/11/2013 H.SAATSOGLOU		PART DESCRIPTION : <b>LIGHT DUTY WHEEL, OF GRAY THERMOPLASTIC NON MARKING RUBBER Ø50</b>		DRAWING NUMBER :		SHEET No.
C3				QUANTITY	SCALE	GEN. DWG. NUM. :
B2				REPLACE :		
A1						
A/A						