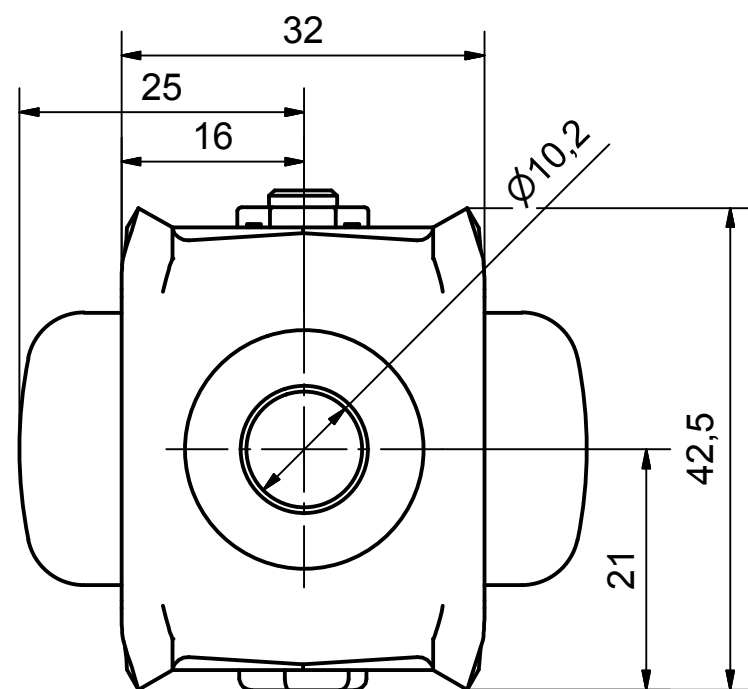



**Load Capacity: 50kg, for speed up to 4km/h
(According to EN 12530)**



Parts List				
ITEM	DESCRIPTION	MATERIAL	QTY	MASS
1	Housing	DD11 STEEL	1	0,068 kg
2	Fitting	DD11 STEEL	1	0,008 kg
3	Axle Nut M6	DD11 STEEL	1	0,003 kg
4	Axle Bolt M6X32	DD11 STEEL	1	0,012 kg
5	Wheel Rim 050M	Polypropylene PP6	1	0,018 kg
6	Wheel Tread 050M	Santoprene	1	0,014 kg
7	Ball Bearing 608-2RS	Steel	1	0,018 kg
8	Plastic Threadguard for WL-TPS050M-GP	Polypropylene PP6	2	0,002 kg

 PRODUCTION OF INSTITUTIONAL CASTORS AND WHEELS THESSALONIKI - GREECE	PERMIS. VARIATIONS:	PART No:			
	SURFACE FINISH:	UNF . DIM.:			
		PART NAME : M.050.TPS.HFGP			
This drawing is the property of RODA S.A. It must neither be reproduced in any manner nor shall it be submitted to third parties or competitors without our written consent	DESIGNED 24/6/2013 E.POLIMEROPOULOU	PART DESCRIPTION : Fixed castor, steel support, bolt hole fitting (10,2mm).Wheel 50x24mm,non marking grey rubber (82shA) single precision bearing.			
	DRAWN 24/6/2013 E.POLIMEROPOULOU				
	CHECKED 24/6/2013 H.SAATZOGLOU				
C3		QUANTITY	SCALE	DRAWING NUMBER :	SHEET No.
B2		REPLACE :		GEN. DWG. NUM. :	
A1					
A/A					